

Air Wipers

Air Miser™, Mini Wipe™ & Rectangular Air Wipers

Drying wire, cable and other extrusions can be a tricky, expensive business. Huestis Industrial Air Wipers use precision controlled air flow to save air, reduce noise and dramatically cut energy consumption.

Air Miser™ automatically passes knots and splices and features quick bracket and air disconnects to make size changes a snap. Mini Wipe™ features protective ceramic inserts for bare wire applications, while Rectangular Wipes handle strip and other profiles. All versions feature very efficient, economical and quiet operation.

Features

Highly Efficient

- Design is based on the maximization of controlled, properly directed air flow.
- A Venturi effect is also created, further increasing airflow.
- Uses much less air than an open pressurized line or adjustable model

Very Economical

- Significantly cuts operating costs vs. adjustables or centrifugal blowers
- Uses approximately .016 m³/min. per air jet at 2.8 bar (.56 SCFM at 40 PSI)

Extremely Quiet

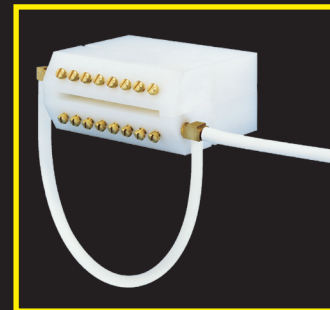
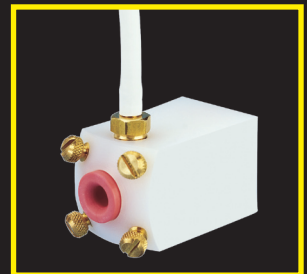
- Low airflow provides a measurable decrease in noise level output.
- Produces only 75 dB at 3.5 bar (50 PSI)



Air Miser™

Mini Wipe™

Designed for bare wire applications, Mini Wipe™ features protective ceramic inserts and low profile bodies.



Rectangular Wipe

Rectangular Wipe features .125-.250 in (3.18-6.35 mm) high slot openings from 1.00-4.00 in (25.4-101.6 mm) wide.

Air Miser™ Drying Cycle

Wet material enters rear of Air Miser™ from a cooling trough or quenching tank. Material is then exposed to a ring of drying air jets. Dry material exits the Air Miser™, aided by an adjustable ceramic centering guide.



Versatile Applications

- Dries wire, cable, plastic, tubing, strip, and extrusions after cooling immersion
- Ensures proper inspection, testing, printing, packaging and storage

Non-Corrosive Materials

- Solid UHMW polyethylene bodies, removable brass jets, nonmarking ceramic guides, stainless brackets
- Custom Teflon®, stainless or aluminum bodies and stainless jets available

Critical Sizing

- Properly sized tolerances dry various products better than adjustable models.
- Quick-disconnect air line fittings and brackets allow fast size changes.

Air Miser™

- Split block, spring-hinged design allows knots, splices and other oversize irregularities to pass through without stopping production.
- Easily opened bodies allow quick thread up or line replacement.
- Snap-on mounting brackets offer quick changes and allow either right-left or left-right line direction.
- Three bracket sizes handle the full range of standard Air Misers.
- Adjustable centering guide with long wearing ceramic cradle offers proper exit alignment.
- Convenient handle offers quick, easy guide adjustments without tools.

Mini Wipe™

- Ceramic inserts offer chafe protection needed for bare wire applications.
- Non-opening, low profile body easily fits into tight process lines
- Offered with either flat or angled (90°) mounting brackets

Rectangular Air Wipe

- Rectangular Wipe handles strip, multiple lines and custom shapes
- Standard .125–.250 in (3.18–6.35 mm) high openings are available in widths from 1.00–4.00 in (25.4–101.6 mm)
- Split block, spring-hinged design simplifies thread-up
- Custom sizes and profiles available

Drying Theory

Controlled Air Flow

- Air is channeled through a manifold in the body and distributed to a ring of jets.
- Jet orifices restrict airflow to provide efficient drying at the lowest possible air consumption.
- Turbulence created by controlling air flow and direction removes water from the material surface.
- A Venturi effect is also created within the air wipe further increasing airflow.
- Sizes are recommendations only. Specific applications may require less or greater clearance for proper drying.
- Custom openings up to 7 in (177.8 mm) diameter available

Air Flow/Noise

Efficient, Quiet Operation

- Most manufacturing plants already use compressed air making conversion to Air Wipes both quick and cost effective.
- Very often, a change to Air Wipes has resulted in reducing the number of compressors on line.
- Air Wipes require only a fraction of the horsepower needed to generate equal electrical requirements of a centrifugal blower.
- Air Wipes controlled airflow produces much lower noise levels than open lines or adjustable models.

AIR MISER SPECIFICATIONS

ISO9001
REGISTERED

Models *Mini Wipe offered in six standard sizes. **AW165 is 90° – AW166 is flat.

Air Miser/ Mini Wipe*	Opening Size	Max Wire Size	Min Wire Size	Jet No.	Bracket Model**
AMS0062 MW0062*	.0625 in (1.59 mm)	.031 in (0.787 mm)	N/A	4 2	AW463 AW165/166**
AMS0125 MW0125*	.125 in (3.18 mm)	.093 in (2.36 mm)	.031 in (0.787 mm)	6 4	AW463 AW165/166**
AMS0187 MW0187*	.187 in (4.75 mm)	.156 in (3.96 mm)	.093 in (2.36 mm)	6 4	AW463 AW165/166**
AMS0250 MW0250*	.250 in (6.35 mm)	.219 in (5.56 mm)	.156 in (3.96 mm)	6 4	AW463 AW165/166**
AMS0312 MW0312*	.312 in (7.92 mm)	.281 in (7.14 mm)	.219 in (5.56 mm)	6 4	AW463 AW165/166**
AMS0375 MW0375*	.375 in (9.53 mm)	.343 in (8.71 mm)	.281 in (7.14 mm)	6 4	AW463 AW165/166**
AMS0438	.438 in (11.13 mm)	.406 in (10.31 mm)	.343 in (8.71 mm)	6	AW463
AMS0500	.500 in (12.7 mm)	.469 in (11.91 mm)	.406 in (10.31 mm)	6	AW463
AMS0625	.625 in (15.88 mm)	.594 in (15.09 mm)	.469 in (11.91 mm)	6	AW463
AMS0750	.750 in (19.05 mm)	.719 in (18.26 mm)	.594 in (15.09 mm)	6	AW463
AMS1000	1.00 in (25.4 mm)	.969 in (24.61 mm)	.719 in (18.26 mm)	6	AW463
AMS1250	1.25 in (31.75 mm)	1.187 in (30.15 mm)	.969 in (24.61 mm)	8	AW463
AMS1500	1.50 in (38.1 mm)	1.469 in (37.31 mm)	1.187 in (30.15 mm)	8	AW484
AMS2000	2.00 in (50.8 mm)	1.969 in (50.01 mm)	1.469 in (37.31 mm)	8	AW484
AMS2500	2.50 in (63.5 mm)	2.469 in (62.71 mm)	1.969 in (50.01 mm)	12	AW484
AMS3000	3.00 in (76.2 mm)	2.969 in (75.41 mm)	2.469 in (62.71 mm)	12	AW484
AMS3500	3.50 in (88.9 mm)	3.469 in (88.11 mm)	2.969 in (75.41 mm)	12	AW495
AMS4000	4.00 in (101.6 mm)	3.969 in (100.81 mm)	3.469 in (88.11 mm)	12	AW495
AMS4500	4.50 in (114.3 mm)	4.469 in (113.51 mm)	3.969 in (100.81 mm)	14	AW495
AMS5000	5.00 in (127.0 mm)	4.969 in (126.21 mm)	4.469 in (113.51 mm)	16	AW495
AMS5500	5.50 in (139.7 mm)	5.469 in (138.91 mm)	4.969 in (126.21 mm)	16	AW503
AMS6000	6.00 in (152.4 mm)	5.969 in (151.61 mm)	5.469 in (138.91 mm)	18	AW503
AMS6500	6.50 in (165.1 mm)	6.469 in (164.31 mm)	5.969 in (151.61 mm)	20	AW503
AMS7000	7.00 in (177.8 mm)	6.969 in (177.01 mm)	6.469 in (164.31 mm)	22	AW503

Rectangular (Models Continued)

Rectangular Air Wipe	Std. Open Height	Std. Opening Length (Custom available)	Jet No.	Bracket Model
RW0125	.125 in (3.18 mm)	1.00–4.00 in (25.4–101.6 mm)	4–16	N/A
RW0250	.250 in (6.35 mm)	1.00–4.00 in (25.4–101.6 mm)	4–16	N/A

Air Flow	Air Miser* Flow per Jet	Mini Wipe* Flow per Jet	dB* Level
10 PSI (0.7 bar)	.238 SCFM (.0067 m³/min)	.227 SCFM (.0064 m³/min)	74.5
20 PSI (1.4 bar)	.354 SCFM (.0100 m³/min)	.336 SCFM (.0095 m³/min)	74.5
30 PSI (2.1 bar)	.460 SCFM (.0130 m³/min)	.454 SCFM (.0128 m³/min)	74.5
40 PSI (2.8 bar)	.557 SCFM (.0158 m³/min)	.579 SCFM (.0164 m³/min)	74.8
50 PSI (3.5 bar)	.653 SCFM (.0185 m³/min)	.673 SCFM (.0190 m³/min)	75.0
60 PSI (4.2 bar)	.751 SCFM (.0213 m³/min)	.770 SCFM (.0218 m³/min)	76.0
70 PSI (4.9 bar)	.843 SCFM (.0239 m³/min)	.870 SCFM (.0246 m³/min)	77.5
80 PSI (5.6 bar)	.948 SCFM (.0268 m³/min)	.984 SCFM (.0278 m³/min)	80.0

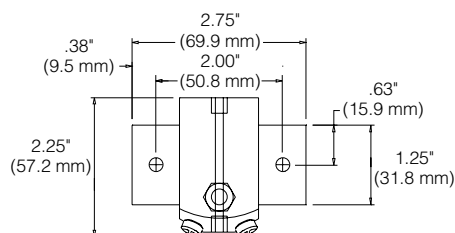
*Per each .75" (19.05 mm) empty Air Wipe. Results may vary.

Air Miser Air Wipers

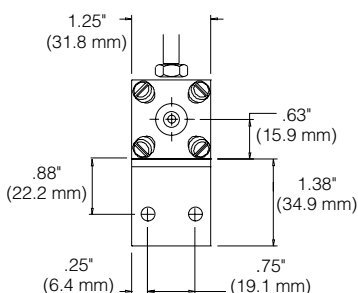
Specifications (Continued)

Air Miser Size Range*	Bracket Model	A	B	C	D	E	F	G	H	I	J
.125–1.25 in (3.18–31.75 mm)	AW463	6.39 in (162.31 mm)	3.92 in (99.57 mm)	2.38 in (60.45 mm)	2.15 in (54.61 mm)	.12 in (3.05 mm)	2.25 in (57.15 mm)	1.75 in (44.45 mm)	2.63 in (66.80 mm)	2.00 in (50.80 mm)	4.50 in (114.30 mm)
1.50–3.00 in (38.1–76.2 mm)	AW484	5.95 in (151.13 mm)	4.75 in (120.65 mm)	4.50 in (114.30 mm)	2.15 in (54.61 mm)	.12 in (3.05 mm)	4.50 in (114.30 mm)	3.19 in (81.03 mm)	3.31 in (84.07 mm)	2.00 in (50.80 mm)	5.50 in (139.70 mm)
3.50–4.00 in (88.9–101.6 mm)	AW495	5.95 in (151.13 mm)	4.75 in (120.65 mm)	7.00 in (177.80 mm)	2.15 in (54.61 mm)	.12 in (3.05 mm)	7.00 in (177.80 mm)	4.00 in (101.60 mm)	3.75 in (95.25 mm)	5.50 in (139.70 mm)	7.50 in (190.50 mm)

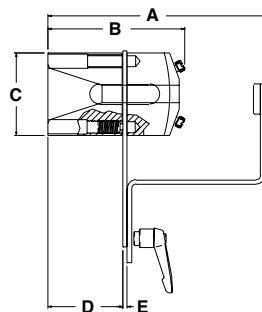
*Please contact Huestis Industrial for Rectangular Wipe sizes and dimensions.



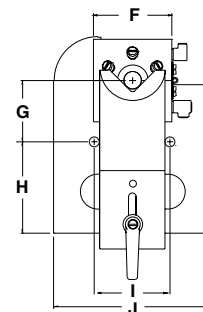
Front View Mini Wipe
with 90° Bracket



Front View Mini Wipe
with Flat Bracket



Side View Air Miser
with Bracket



Front View Air Miser
with Bracket